

DATA SHEET

13X26FT

Overall Peak Height
12' 9" (388cm)



Entrance Height
7' 1" (215cm)

Pack Size (L x W x H)
16.5 x 28.3 x 81"

E1 13X26FT CANOPY TENT

Equip your commercial-grade Ecotent with your option of tent fabrics and customization options. Your Ecotent Product Expert can assist with any questions, pricing, and product support.

QUICK LINKS:

[Ecotent Website](#)

[3D Tent Configurator](#)

[Tent Sizes](#)

[Photo Gallery](#)

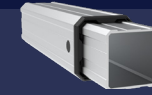
[Technical Details](#)

[Warranties & Certificates](#)



TECHNICAL DETAILS

E1*



Frame Construction

| | |
|---------------------|------------------------------|
| Frame Material | Aluminum |
| Leg Shape | Ribbed Square |
| Leg Profile | 46x56.5mm (2.5mm) |
| Truss Profile | 30x15mm (2.8mm) |
| Connecting Elements | Aluminum + Rubber Protectors |
| Footplate Material | Anodized Aluminum |
| Push-Button Locks | ✓ Comfort Press |
| Corner Brackets | ✓ Fixed Position |

Weight

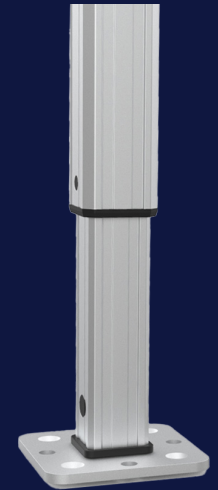
155lbs (70.5kg)

Transport Bag

✓ Heavy-Duty PVC

Frame Height Extensions

✓ Up to 36"



E1 TEXTILE OPTIONS

Oxford 500D, Oxford 250D, Oxford 250D NFR* & Recycled Fabric NFR*

*NFR: Non-Fire Rated. All fabrics are certified fire-retardant unless labeled as NFR.

TEXTILE PROPERTIES

| | OXFORD 500D | OXFORD 250D |
|--|--|-------------------------------------|
| Waterproof Rating (DIN EN 20811) | ✓ 2x Industry Avg. 2,000mm | ✓ 1.5x Industry Avg. 1,600mm |
| Fire Certifications B - s1, d0 (difficult to ignite) | NFPA 701, CPAI-84 Sec.6, EN 13501-1:2019, CAN/ULC-S109, CA Title 19 Sec. 1237 | |
| Color Fade Resistance (DIN EN ISO 105-B02) | Durable blue scale: 4.5-6.5 of 8 | Durable blue scale: 4.5-6.5 of 8 |
| Printing Options | ✓ Thermal & Full | ✓ Thermal & Full |

FABRIC COLORS

